

# INSIDE THIS ISSUE

First State Chapter Board Members  
& Committee Chairs

President's Message

Business Partner Spotlight

Event Reminders

Announcements

First State Chapter Events

Business Partners

## Farewell to Summer: A season of Success and Welcome Fall : New Beginnings

As we bid adieu to the vibrant days of summer, we reflect on the wonderful events and memorable moments that made this season truly special.

Our *Educational Session* hosted by Assured Partners on Delaware Paid Family Leave Benefits was a resounding success. Attendees gained valuable insights into the benefits and intricacies of the program, empowering them with knowledge for the future.

The *Splatter Paint Summer Social Event* was a colorful highlight, where participants unleashed their inner Picasso. It was a fantastic opportunity to bond, create, and showcase artistic talents in a fun and relaxed atmosphere.

We also enjoyed the *Past Presidents Happy Hour* at Wilmington Brew Works. With great drinks, delicious pizza, and lively tunes, it was an evening filled with camaraderie and celebration of our past leaders.

As we transition into the crisp days of fall, we eagerly anticipate the exciting events and gatherings on the horizon.

Our next *Educational Session* with Wilmington's Director of Cultural Affairs promises to be enlightening. We'll explore the city's vibrant happenings, safety initiatives, and the benefits of working, living, and playing in Wilmington.

The upcoming *Caesar Rodney and Brandywine Blue level Business Partners Event* will be a fantastic opportunity to gather, share insights, and strengthen our professional networks.

And let's not forget our *Annual Blood Drive!* This vital event is a chance to make a difference and save lives. Be sure to sign up and donate.

**Here's to a season of growth, learning, and community spirit. We look forward to seeing you at our upcoming events!**

*Enjoy, First State Chapter Board Members*

# First State Chapter Board Members and Committee Chairs

Christina Oaddams, President  
Telephone: 302-416-9689  
COaddams@atllp.com

Denise Frawley, Business Partner Co-Chair  
Telephone: 302-421-6854  
denise.frawley@saul.com

Rachel Nuzzi, Social Co-Chair  
Telephone: 302-351-9283  
rnuzzi@morrisnichols.com

Jessica Tomb, Vice President  
Telephone: 302-351-9151  
Jtomb@morrisnichols.com

Heather Alleman, Business Partner Co-Chair  
Telephone: 302-551-6740  
heather.alleman@maslawde.com

Arlcia Payne, Social Co-Chair  
Telephone: 302-442-7070  
apayne@beneschlaw.com

Sherry Leary CLM, Treasurer  
Telephone: 302-888-6966  
Sleary@morrisjames.com

Lisa Pedicone, Membership Chair  
Telephone: 302-467-4442  
pedicone@lrclaw.com

Joe Lofink, Education Chair Co-Chair  
Telephone: 302-571-5742  
jlofink@ycst.com

Pam Morton, Secretary  
Telephone: 302-300-3430  
Pamela.morton@btlaw.com

Gina Edwards, Diversity & Inclusion Chair  
Telephone: 302-651-7889  
edwards@rlf.com

Julie Dubreuil, Education Co-Chair  
Telephone: 302-468-5627  
julie.dubreuil@us.dlapiper.com

Page Chase, Immediate Past President  
and Marketing Co-Chair  
Telephone: 302-573-4811  
Pchase@hfddel.com

Angela Pedicone- Baker, Marketing Co-Chair  
Telephone: 302-468-5658  
angela.pedicone-baker@us.dlapiper.com

**First State Chapter's Website:**  
[www.firststateala.org](http://www.firststateala.org)

**Fall 2024 Edition Editor:**  
Angela Pedicone-Baker & Page Chase

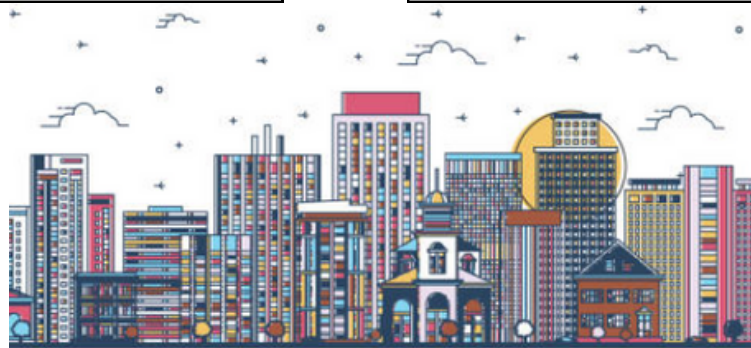


## Editorial Board

Julie Dubreuil  
Denise Frawley  
Kellie Snyder-Roncace

Please forward all article  
submissions for future newsletters to:

Angela.Pedicone-Baker@us.dlapiper.com &  
Pchase@hfddel.com



Wilmington

## A Message from our President:

As we gear up for the final quarter of the year (unbelievable!) I can't help but reflect back on the past eight months. We've had mix of great educational sessions, as well as fun and different social events for our members and business partners. I know we're all going to be shifting into year-end mode soon, with the upcoming holiday season added in, but I hope you will be able to join one of our remaining events before the end of the year. I'd like to highlight two events next month: October 16th is our annual Blood Drive, and on October 28th, our annual half-day seminar focusing on wellness.

I hope everyone had an enjoyable summer and I look forward to seeing you at an upcoming event soon!

*Best,  
Christina*



CHRISTINA OADDAMS

FIRST STATE CHAPTER PRESIDENT

[www.firststateala.org](http://www.firststateala.org)

*Reminder*

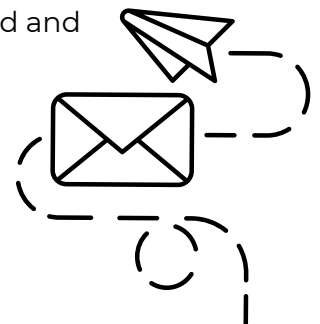
We've launched an exclusive email list serv for valued members. Enhance communication and stay informed about updates, events, and opportunities by emailing **[chaptermembers@firststateala.org](mailto:chaptermembers@firststateala.org)**.

Remember to whitelist this email to avoid missing any communications.

Stay Updated: Get timely notifications about events and announcements.

Engage and Connect: Join discussions and connect with fellow members.

Thank you for being an integral part of our community. We look forward to staying connected and fostering a more engaged and informed membership!





## UNLOCK THE POWER OF OPEN SOURCE INTELLIGENCE

- Executive and HNWI Protection
- Criminal Asset Tracing
- Leveraging Emerging Social Media Applications
- Due Diligence
- Situational Awareness
- Operational Security
- Deponent and Juror Intelligence
- Entity Investigations
- Expert Witness Reports and Dossiers



Streamline your OSINT investigations with **Parcels**



 [Forensics@parcelsinc.com](mailto:Forensics@parcelsinc.com)  (302) 254-7208




## STAY CONNECTED WITH US!

*Don't miss out on our latest updates, events, and exclusive content!*

*Follow us on social media:*

 **Instagram: [@firststateala](https://www.instagram.com/firststateala)**

 **Facebook: [First State Chapter of the Association of Legal Administrators](https://www.facebook.com/FirstStateChapteroftheAssociationofLegalAdministrators)**

*You can also find us at our website:*  
**[firststateala.org](http://firststateala.org)**



**302-239-5990**  
[info@justlegalinc.com](mailto:info@justlegalinc.com)

## JUST IN CASE, JUST IN TIME JUST FOR YOU...

WITH OVER 20 YEARS OF SPECIALIZED, INDIVIDUALIZED AND CUSTOMIZED ATTORNEY PLACEMENT.

JUST LEGAL WORKS WITH TOP LAW FIRMS, CORPORATE LEGAL DEPARTMENTS AND GOVERNMENT AGENCIES.

TRUST JUST LEGAL TO DO THE WORK FOR YOU...HUNDREDS OF OTHERS HAVE.

CONFIDENTIALITY ALWAYS MAINTAINED.



**Tara Mosier, Esq.**  
Director of Attorney  
Placement

**Sueann M. Hall**  
President, Founder &  
CEO

**Laura Donatello**  
Director of Legal  
Staffing

## BP Spotlight:

# JOE OQUENDO - CONTEMPORARY STAFFING SOLUTIONS

Joe Oquendo has been with Contemporary Staffing Solutions (CSS) for the past three years, in his role as an Account Executive. He is responsible for cultivating and maintaining strategic partnerships with HR professionals and administrators nationwide, ensuring their recruitment needs are addressed with the utmost efficiency and precision.

Joe's journey to CSS began with the Enterprises Management Training Program, which equipped him with a robust foundation in leadership and business operations. He holds a degree in Business Administration from Lycoming College, where he also showcased his teamwork and perseverance as a tight end on the football team.

One of Joe's proudest achievements is winning the President's Club award, reflecting his dedication to client satisfaction and the overall success of his team. He is also an active member of the Philadelphia Society of People & Strategy (PSPS) and the Talent Acquisition Leadership Alliance (TALA), staying engaged with industry trends and expanding his professional network.

Beyond his professional commitments at CSS, Joe is an active member of the Philadelphia Society of People & Strategy (PSPS) and the Talent Acquisition Leadership Alliance (TALA). These affiliations keep him engaged with industry trends and expand his professional network.

Joe foresees challenges for clients in navigating the evolving work environment, particularly the shift from remote to hybrid and in-person setups. He emphasizes the importance of balancing flexibility with operational efficiency and maintaining team cohesion.

Working with law firms requires a much more detail-oriented approach compared to non-law firm clients or traditional corporations. The roles placed demand highly specialized skill sets, as the individuals represent the law firm and its partners. Law firms prioritize precision and thoroughness, making the recruitment process more intricate. However, Joe truly enjoys placing candidates in these roles because he gets to see the tangible impact they have on the firm and the positive contributions they bring to their teams. It's rewarding to know that they are helping law firms find the right talent to support their success.

Joe supports the ALA because it provides a valuable opportunity to engage with existing clients and the broader community they work within. Through ALA, CSS can share their perspective on the market while also learning from the experiences and insights of others. It's a very collaborative environment, and that exchange of ideas helps everyone stay informed and better positioned to navigate industry challenges. The sense of community is strong, and it's rewarding to be a part of that collective growth.

CSS offers specialized solutions for temporary, contract, and permanent hires. Joe and his team pride themselves on their deep understanding of the legal field, ensuring they find top talent that aligns perfectly with their clients' needs. Their proactive approach involves actively seeking out the best candidates and building lasting relationships based on both skills and cultural fit.

Moreover, CSS's commitment to compliance and staying current with legal regulations ensures that their candidates are not only qualified but also up-to-date with industry changes. This dedication to personalized service helps their clients remain competitive without compromising on quality or efficiency.



To get in touch with Joe Oquendo, you can reach out to him through Contemporary Staffing Solutions (CSS):

[Joe.oquendo@csspsg.com](mailto:Joe.oquendo@csspsg.com)

[csspsg.com/law-firm-staffing-services](https://csspsg.com/law-firm-staffing-services)

# Upcoming First State Chapter Events

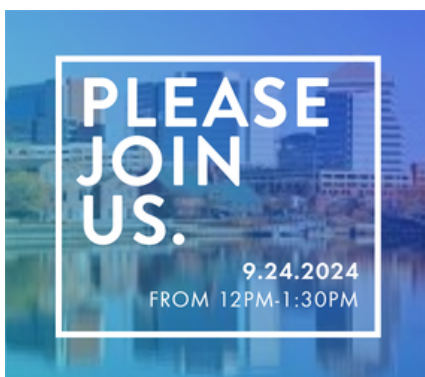


## Education Session September 24, 2024

Morris James  
500 Delaware Avenue, Suite 1500  
12:00pm - 1:30pm  
Lunch will be provided

Join The First State Chapter of ALA as we welcome Tina Betz, Director, Mayor's Office of Cultural Affairs, City of Wilmington, Delaware.

Tina will share exciting happenings in the city, safety initiatives, and benefits of living, working and "playing" in the city of Wilmington!



## Caesar Rodney & Brandywine Blue Business Partner Event October 10, 2024

Al Chu's - DECO  
HOTEL DU PONT  
111 W 10th St, Wilmington, DE 19801  
5:00pm - 7:00pm

We are pleased to announce that arrangements have been made for a Sushi Making Class at Al Chu's Sushi at DECO on Thursday, October 10th, from 5:15 pm to 6:45 pm, as part of our BP October event.

Please arrive by 5:00 pm to enjoy a drink and be ready to start the class promptly at 5:15 pm.

This invitation is extended to business partners at the Caesar Rodney and Brandywine Blue levels, and the Board.

We look forward to your participation in this exciting event.



## First State Chapter of the ALA's Annual Blood Drive

Your support can make a significant impact in the fight against breast cancer and other critical health conditions.

- **Date:** October 16, 2024
- **Time:** 9:00 AM to 2:00 PM
- **Location:** 1201 Connect, 1201 North Market Street, Lobby Floor, Wilmington, DE 19801

### Why Your Donation Matters:

- Support Breast Cancer Patients: Blood donations are crucial for patients undergoing treatment, including those battling breast cancer.
- Life-Saving Impact: Each donation helps multiple patients and supports local healthcare systems.
- Community Solidarity: Your participation demonstrates compassion and commitment to improving lives in our community.

### How to Get Involved:

- RSVP & Schedule Your Donation: Please scan the QR code below to register for your preferred time slot. Early registration helps us manage the event smoothly.
- Share with Others
- Prepare for Donation: Ensure you are well-hydrated, have eaten a light meal, and bring a form of ID.



 Blood Bank  
of Delmarva

# Upcoming First State Chapter Events

Join the First State Chapter of the Association of Legal Administrators for an interactive, enlightening, & educational

## *HALF-DAY WELLNESS SEMINAR*

focused on putting yourself first and provide you with tools to foster a culture of self-care in the workplace



Monday, October 28, 2024  
Young Conaway Stargatt & Taylor  
1000 N. King Street, Wilmington

12pm: Check-in and lunch  
1pm: Education Sessions  
4pm: Social Hour (food, drinks, friends)

Please RSVP by October 16th

**On-site Biometric Screenings - Chair Massages - Assisted Stretching - Nutritional Coaching**  
**Comfortable, casual attire is recommended.**



Kiersten Janvier - House of Yoga DE

1:00 PM - 1:30 PM  
**SOUND BATH**

Sound healing has been found to reduce symptoms of anxiety, depression and stress. The soothing and harmonizing effects of sound vibration can help calm the mind, promote emotional balance, and enhance overall mental well-being.

\*feel free to bring a yoga mat.

1:45 PM - 2:45 PM  
**SELF-CARE PRACTICES THAT IMPROVE MENTAL WELLNESS**  
It's easy to understand the need for self-care, but it's the fact that those who look after others (personally or professionally) tend to overlook themselves. Join Eric Rodriguez from Caron Treatment Centers as we explore practical and effective strategies to nurture your mental well-being.



3:00 PM - 4:00 PM  
**EATING FOR MENTAL HEALTH**

This presentation by HUSK Nutrition+ will provide an overview of how food and eating can impact mental health. It will cover stress, mood, nutrients that improve mental health, mindful eating, and other lifestyle factors.



## Interested in becoming a Certified Legal Manager?

The First State Chapter encourages and promotes ALA's Certified Legal Manager (CLM) Program. To learn more about CLM please visit [ALA's National Website](#).

Are you an ALA member that has questions or needs help? Please utilize the [ALA Online Community](#) for resources to support you.

Don't forget to check out the ALA's [Legal Management Magazine](#) to stay up to date on trends in our industry.



# Announcement: First State Chapter's 2024 Scholarship Winner

Winner of the First State Chapter's 2024 Scholarship to the University of Delaware's Paralegal Program:  
**Lindsay Spiece.**



We are delighted to announce that **Lindsay Spiece** has been awarded the First State Chapter's 2024 Scholarship to the **University of Delaware's Paralegal Program**.

Lindsay is a distinguished 2022 graduate of Drexel University. She has demonstrated her commitment to the field through her previous role as an office assistant at ChristianaCare in their School Based Wellness Centers. Currently, Lindsay is making significant contributions as a Paralegal Assistant in the Corporate Litigation group at **Morris, Nichols, Arsht & Tunnell LLP**.

Beyond her professional achievements, Lindsay has shown a strong dedication to community service. She has volunteered for many years with **Word of Life Delaware**, focusing on mentoring young adults. Additionally, in 2016, she played a pivotal role in launching a small business.

This year, we received numerous applications from highly qualified candidates. However, Lindsay's impressive resume and outstanding letters of recommendation set her apart, making our decision a bit easier. We firmly believe that Lindsay is highly deserving of this scholarship.

We extend our heartfelt **congratulations** to Lindsay and wish her continued success as she embarks on this new chapter in her legal career. We are confident that she will excel in the Paralegal Program and make significant strides in her professional journey.



**First State Chapter**  
Delaware

A Chapter of the Association of Legal Administrators



## PAST ALA EVENTS

### Educational Session



## DELAWARE Paid Leave

Family and Medical Leave Insurance Program

We would like to extend our heartfelt thanks to Maria Clyde and Ashley Buczik from Assured Partners for organizing and leading our recent education session on Delaware's new Paid Family Medical Leave program. Your expertise and dedication in explaining the intricacies of this important initiative were invaluable.

The session provided our team with a comprehensive understanding of how the program works, including eligibility, benefits, and the various options available to employers. Your efforts have equipped us with the knowledge we need to navigate these changes effectively.

Thank you once again for your time and commitment to educating us on this significant development.



### Summer Social



Splashes of color and bursts of creativity at the ALA Summer Social!

Our Splatter paint event brought the legal community together in a vibrant and fun-filled atmosphere.

It was a perfect way to celebrate teamwork and creativity while adding a little color to our summer!



## PAST ALA EVENTS

---

### Past Presidents Event



The First State Chapter Association of Legal Administrators recently hosted a delightful summer gathering at Wilmington Brew Works. The event brought together current and past presidents, fostering a sense of camaraderie and shared history.

The evening was filled with laughter, engaging conversations, and an abundance of fun. Attendees enjoyed delicious pizza, which perfectly complemented the vibrant atmosphere of the venue. Adding to the excitement, Wilmington Brew Works was also hosting Turntable Tuesday, allowing us to thumb through their impressive vinyl collection and make song requests.

We sincerely thank everyone who attended and played a role in making this event a success. Your presence made the evening truly memorable. We look forward to seeing you at our next gathering, where we will continue to build on the strong foundation of our community.

Thank you once again, and here's to many more successful events in the future!

## An Invite from Philadelphia ALA

---

Phila-ALA extends an invitation to the members of the First State Chapter to attend our Annual Fall Golf Outing on Monday, October 21st at the Riverton Country Club in Cinnaminson, NJ.

This is a fantastic opportunity for First State members to network and connect with members from the Philadelphia and Independence chapters.

You do not have to golf to attend this event. There will be other activities throughout the afternoon such as Bowling and Bingo! We will end the day with a cocktail dinner reception where you can network with members, Business Partners, enter to win gift baskets and prizes, and participate in a 50/50 raffle to raise funds for Manna Philly, a food service organization that provides nutritious, medically appropriate meals for individuals battling serious illnesses.

Please use this link to register:  
[alap.memberclicks.net/24golfMembers](https://alap.memberclicks.net/24golfMembers).

We look forward to seeing you on  
October 21st.

A promotional poster for the Philadelphia ALA Networking Event Annual Fall Outing. The background is light blue with stylized white clouds. At the top left is the Philadelphia ALA logo, which includes a red and green stylized 'P' and the text 'Philadelphia A Chapter of the Association of Legal Administrators'. To the right of the logo, the words 'NETWORKING EVENT' are written in green. Below this, the main title 'ANNUAL FALL OUTING' is written in large, bold, green capital letters. Underneath the title, the date and location are listed: 'MONDAY, OCTOBER 21ST' and 'RIVERTON COUNTRY CLUB, CINNAMINSON, NJ'. A green banner with white text reads 'YOU CAN COME GOLF OR BOWL AND BINGO!'. Below this, the event schedule is listed: 'Golfer Registration and Lunch from 11:30 am - 12:15 pm', 'Shotgun Start at 12:30 pm', 'Bowling from 1:00 - 2:45 pm', 'Bingo from 3:00 - 5:00 pm', and 'Dinner Reception from 5:00 - 7:00 pm'. At the bottom, it says 'FOR MORE INFORMATION AND REGISTRATION LINKS VISIT' followed by the URL 'HTTPS://WWW.PHILA-ALA.ORG/'. The bottom of the poster features a green grassy hill with a white golf ball, a red bowling ball, and a white golf club head.



# FirstStateChapter

DELAWARE

A Chapter of the Association of Legal Administrators

## BUSINESS PARTNERS

### CAESAR RODNEY LEVEL

Parcels is a leading provider of high-quality support services to the legal and corporate community. The one driving force behind the company is simple: the client comes first. Incorporated in 1980, Parcels is owned and operated by James A. and Maureen Cauley Johnson, Delawareans with deep ties to the community.

The company's objective has always been to grow the organization and its reputation through extraordinary service to the client, through the recruitment and retention of exceptional cross-trained staff, and through prudent financial management. The focus has always been on expansion of services that are useful and cost-effective to our clients rather than on increasing the number of locations.

Although Parcels' clients are from diverse segments of the corporate world, it specializes in serving the legal community in Delaware. Established first as a Courier service to law firms, Parcels kept a fine ear tuned to the needs of its clients; it built relationships with the major law firms and with the courts, and it developed a deep, integrated staff with expertise in the services it offered. Parcels, with its wide range of peripheral services, allows law professionals to do what they do best - the practice of law.



230 North Market Street PO Box 27  
Wilmington, DE 19899

Contact Person: Vito DiMaio

Email: [vdimaio@parcelsinc.com](mailto:vdimaio@parcelsinc.com)

Phone: (302) 658-9926

### BRANDYWINE BLUE LEVEL





# FirstStateChapter

DELAWARE

A Chapter of the Association of Legal Administrators

## CHRISTIANA LEVEL

**Fulton Bank**

**Hilyard's**  
INC.  
**Business Solutions**  
Communicate | Collaborate | Connect

**Brown & Brown**  
INSURANCE®

**Tech Solutions**  
INC.  
Managed Services  
Computer Consulting  
Network Administration

**TECHGUIDES**  
PAINLESSTECHNOLOGY.COM

**IFS**  
**BENEFITS**

**DSO**  
FURNITURE

**AHEAD**

**DLS** DISCOVERY

**EMERALD BUSINESS SUPPLY**  
*for your complete office solutions*

**TONIC**  
- Seafood & Steak -

**NEWTON ONE**  
DELAWARE PHILADELPHIA NEW YORK LANCASTER

**CLOUDSCALE 365™**

**Sherms**  
catering

**BLS**  
ELFINT • LYONS • SHUMA  
Certified Public Accountants

**reliable**

**Gunnip & company** LLP  
Certified Public Accountants and Consultants